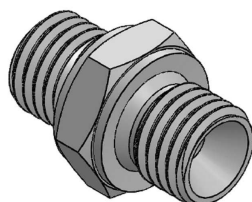
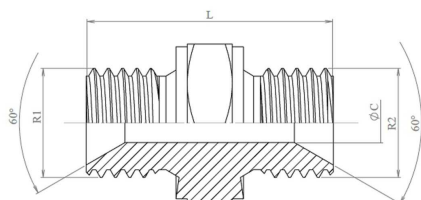


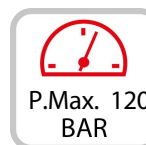
## FICHA DE PRODUCTO - TECHNICAL SHEET - FEUILLE TECHNIQUE

**RACOR INTERMEDIO MACHO MACHO/ FITTING WITH MALE MALE /  
RACCORD INTERMÉDIAIRE AVEC MÂLE MÂLE**

**Code: 2.425.002-009**



MALE/MACHO



? 3EF7D



| CÓDIGO    | R1        | R2        | L  | HEX 1 | ØC   |
|-----------|-----------|-----------|----|-------|------|
| 2.425.002 | 1/4" BSP  | 1/4" BSP  | 31 | 17    | 4,7  |
| 2.425.003 | 3/8" BSP  | 3/8" BSP  | 35 | 22    | 8    |
| 2.425.004 | 1/2" BSP  | 1/2" BSP  | 40 | 27    | 11   |
| 2.425.005 | 3/4" BSP  | 3/4" BSP  | 45 | 32    | 16   |
| 2.425.006 | 1" BSP    | 1" BSP    | 53 | 41    | 22   |
| 2.425.007 | 1"1/4 BSP | 1"1/4 BSP | 56 | 50    | 28,5 |
| 2.425.008 | 1"1/2 BSP | 1"1/2 BSP | 65 | 55    | 33   |
| 2.425.009 | 2" BSP    | 2" BSP    | 69 | 70    | 46   |

**2.425.002 Racor intermedio latiguillo 1/4" macho/macho.**

**2.425.003 Racor intermedio latiguillo 3/8" macho/macho.**

**2.425.004 Racor intermedio latiguillo 1/2" macho/macho.**

**2.425.005 Racor intermedio latiguillo 3/4" macho/macho.**

**2.425.006 Racor intermedio latiguillo 1" macho/macho.**

**2.425.007 Racor intermedio latiguillo 1.1/4" macho/macho.**

**2.425.008 Racor intermedio latiguillo 1.1/2" macho/macho.**

**2.425.009 Racor intermedio latiguillo 2" macho/macho.**

### APLICACIONES-APPLICATIONS-APPLICATIONS:

- Adaptador con rosca BSP cono 60° macho-macho en acero al carbono, con tamaños de rosca desde 1/4" hasta 2".

Fabricado de acuerdo a la ISO8434.

- Adapter with BSP 60° male-male cone thread in carbon steel, with thread sizes from 1/4 "to 2".

Manufactured in accordance with ISO8434.

- Adaptateur avec filetage conique mâle-mâle BSP 60° en acier au carbone, avec des tailles de filetage de 1/4" à 2".

Fabriqué conformément à la norme ISO8434.

### OPCIONAL-OPTIONAL-OPTIONNEL:

2.300.330 - SELLADOR ROSCAS.

2.326.918 - ROLLO TEFLÓN.

### DOTACION- INCLUDE -DONATION:

### RELACIONADO-RELATED-RELATION: